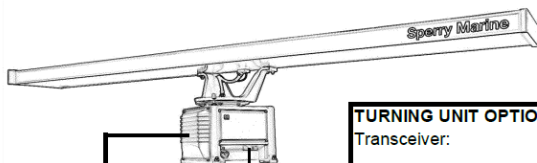


VISIONMASTER FT®

250 S-Band (Masthead TX/RX with Tabletop or Kit display format)

ANTENNA OPTIONS

- 9' Antenna **
- 12' Antenna



SCANNER CONTROL UNIT:
Customised to ships supply option.

TURNING UNIT OPTIONS *

Transceiver: 30kW

Input Voltage (Transceiver): 92 - 276V AC, 47 - 64Hz, 1φ
 Input Voltage (Motor Supply): Nominal 220/240V AC, 50/60Hz, 3φ
 Standard Rotation Speed: Nominal 25 & 30 rpm @ 50Hz, 48rpm @ High Speed
 Other Supply Voltage/Speeds: Options FF20 to FF33

CABLE KIT OPTIONS

33m	115/MIK/33
67m	115/MIK/67
100m	115/MIK/100
130m	115/MIK/130
150m	115/MIK/150
180m	115/MIK/180

Zero Hal also available

INTERFACING

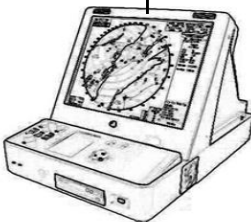
Ship's Mains: 92 - 276V AC, 47 - 64Hz, 1φ

Compass Input:
 Standard: Stepper & 360:1 Synchro
 Special (Option FF5 1:1, 36:1, 90:1 & 180:1 Synchro
 For best performance NGSM recommends the use of an analogue compass input. (If serial compass is used NGSM recommends a minimum update rate of 50Hz for reliable ARPA tracking.)

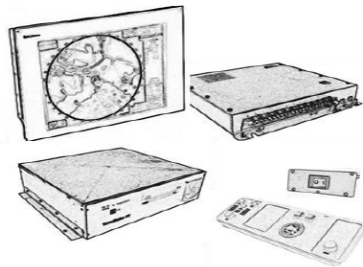
Serial I/O: (8 Inputs, 6 Outputs)
 Log, Wind, Depth, AIS, Nav Data, Track Table, etc.

Alarm Relay:
 Configurable Remote Alarm
 Vigilance Alarm
 System Available Alarm

2250



TABLETOP



KIT FORMAT

ECAT2 Radar, ECAT2C Chart Radar

(Enhanced CAT2 (ECAT2) Radar has all the functionality of a CAT1 Radar but with 250mm screen size)

19" Hi Resolution Flat Panel Monitor:	Standard
Secondary Viewer/VDR Output:	Standard
AIS on Radar:	Standard

(AIS to be supplied separately)

ECAT2 Radar, ECAT2C Chart Radar, ECAT2D Dual Channel Radar & ECAT2DC Dual Channel Chart Radar

(Enhanced CAT2 (ECAT2) Radar has all the functionality of a CAT1 Radar but with 250mm screen size)

19" Hi Resolution Flat Panel Monitor:	Standard
Secondary Viewer/VDR Output:	Standard
AIS on Radar:	Standard

(AIS to be supplied separately)

* Only VMFT Radar systems with Performance Monitor are Type Approved.
 ** VMFT Radar systems with a 9' antenna are not Type Approved